

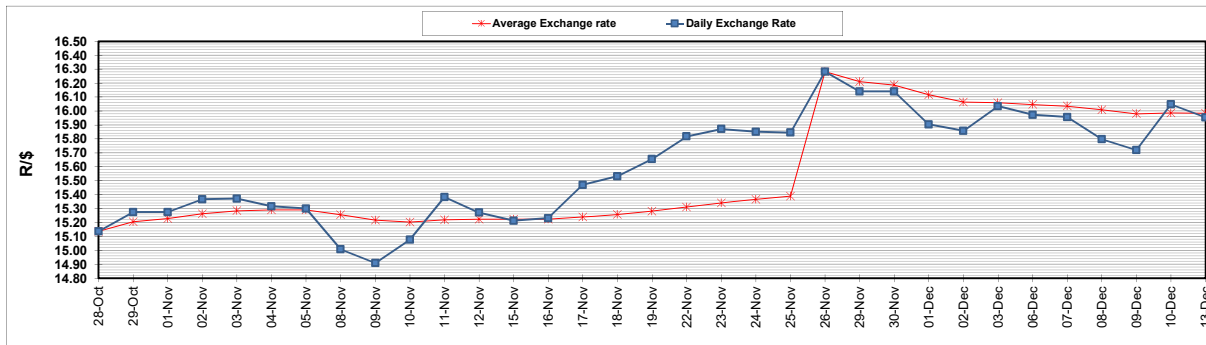
	PETROL 95 ULP	PETROL 93 ULP & LRP	DIESEL 0.05%	DIESEL 0.005%	ILL. PAR.
GAUTENG PUMP PRICE (SA c/l) AS FROM 01/12/2021	2,029.000	2,007.000	-	-	-
WHOLESALE PRICE (SA c/l) AS FROM 01/12/2021	-	-	1,792.480	1,797.880	1,167.688
SINGLE NATIONAL MAXIMUM RETAIL PRICE	-	-	-	-	1,489.000
BASIC FUEL PRICE - 13/12/2021 (SA c/l)	922.274	904.824	897.386	900.251	884.766
PRESS RELEASE CONTRIBUTION TO BFP 01/12/2021 - 13/12/2021 (SA c/l)	973.670	961.670	955.630	961.030	946.128
UNIT OVER/(UNDER) RECOVERY - 13/12/2021 (SA c/l)	51.396	56.846	58.244	60.779	61.362
AVERAGE BASIC FUEL PRICE 26/11/2021 - 13/12/2021	881.920	865.694	868.519	872.943	860.189
AVERAGE UNIT OVER/(UNDER) RECOVERY 26/11/2021 - 13/12/2021	82.610	86.835	77.611	78.087	77.439

ANALYSIS MOVEMENT OF AVERAGE OVER/(UNDER) RECOVERY

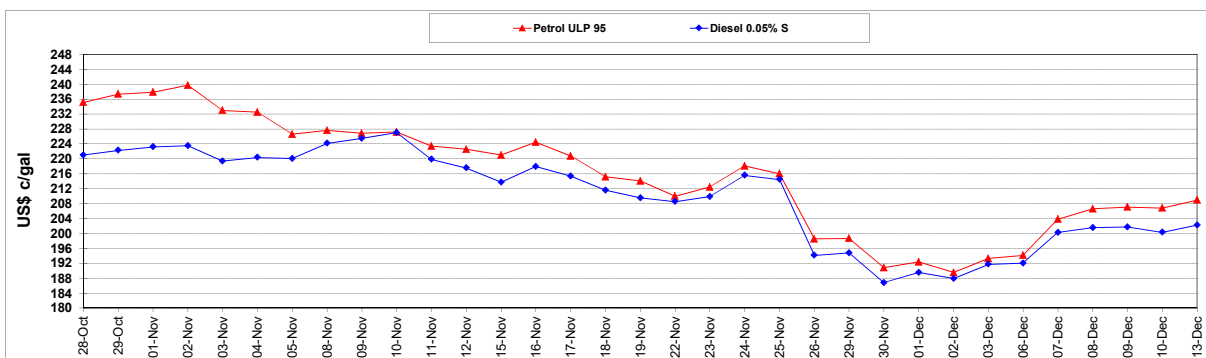
	PETROL 95	PETROL 93	DIESEL 0.05%	DIESEL 0.005%	ILL. PAR.
- MOVEMENT IN INTERNATIONAL PRODUCT PRICES	115.418	119.040	109.920	110.561	109.438
- MOVEMENT IN EXCHANGE RATE	(32.808)	(32.204)	(32.309)	(32.474)	(31.999)
AVERAGE UNIT OVER/(UNDER) RECOVERY 26/11/2021 - 13/12/2021	82.610	86.835	77.611	78.087	77.439

R/\$ EXCHANGE RATE - (R/\$15.9535 - 13/12/2021)

EXCHANGE RATE USED IN BASIC FUEL PRICE



INTERNATIONAL PRODUCT PRICES OF BASKET USED IN BASIC FUEL PRICE



BASIC FUEL PRICE IN SA CENTS PER LITRE

